

Mall of America Mini Golf

VDC TEAM 6

By: Brandon Forrest, Hayvon Lee, Tysion Jefferson, Cody Huskey, Zach Lowe, Karrington Ashley, Jacob Leard

Team Norms

Teams Norms

Communication:

- Kik Messenger
- Google Mail
- Text Messaging

Sketches

- 2 sketches per teammate
- Top, Side, and isometric view of the hole if needed

Teamwork

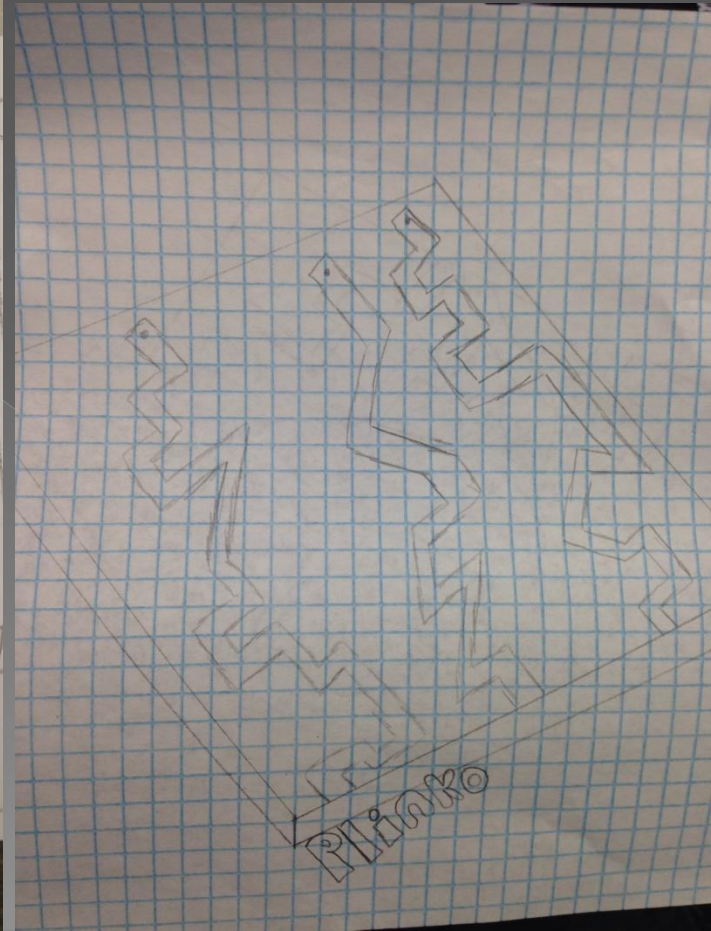
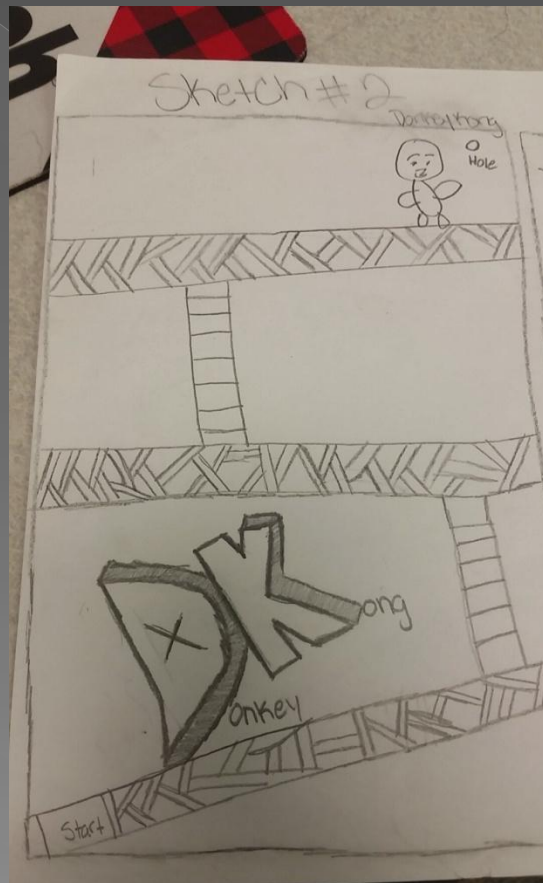
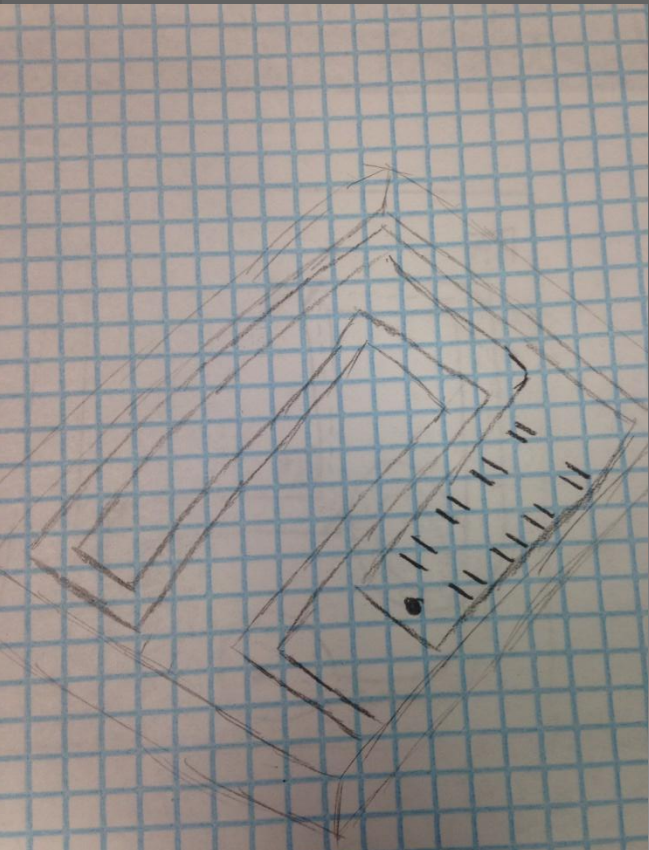
- If someone disagrees on something the whole team votes
- Stay open minded to your teammates opinions
- Respect ones decision

Data

- Upload all data to the VDC Team 6 Folder that is our personal folder
- Only Sketches, Research, Pictures, And Documentation should go into this folder.



Sketches

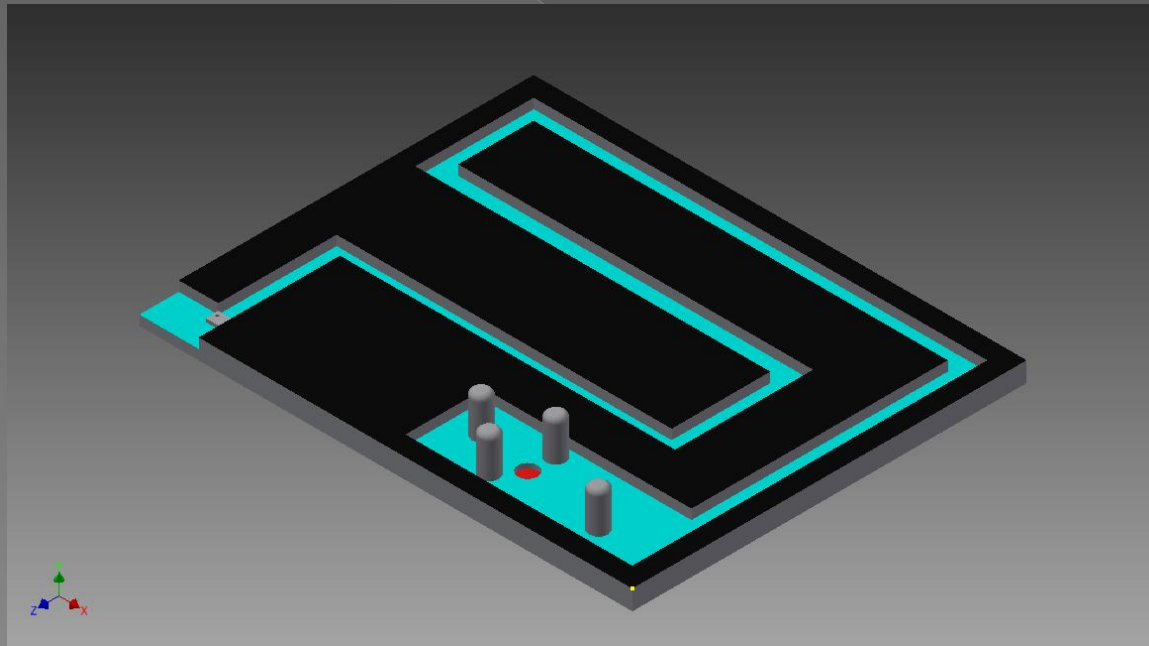


The Problem

- The Mall of America in Minneapolis, MN has designated an area of mall space to construct an indoor mini-golf course. Mall of America executives have placed a call for design concepts from the leading design firms across the United States. Your design team will be one of several teams who will pitch a design concept to MOA execs. The winning concept will receive the contract to design and build a state of the art mini-golf course in the MOA.

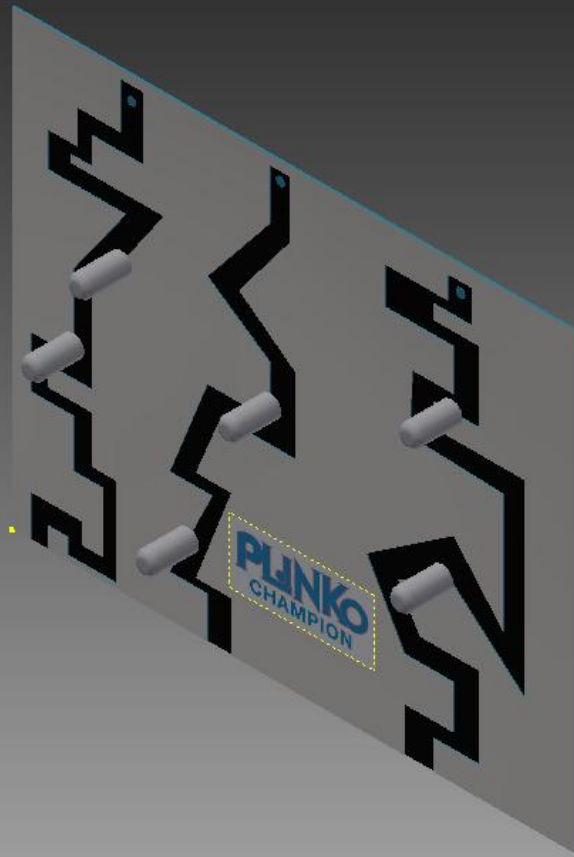
Scary Maze Hole

- This hole is based off the biggest Halloween prank of 2004.



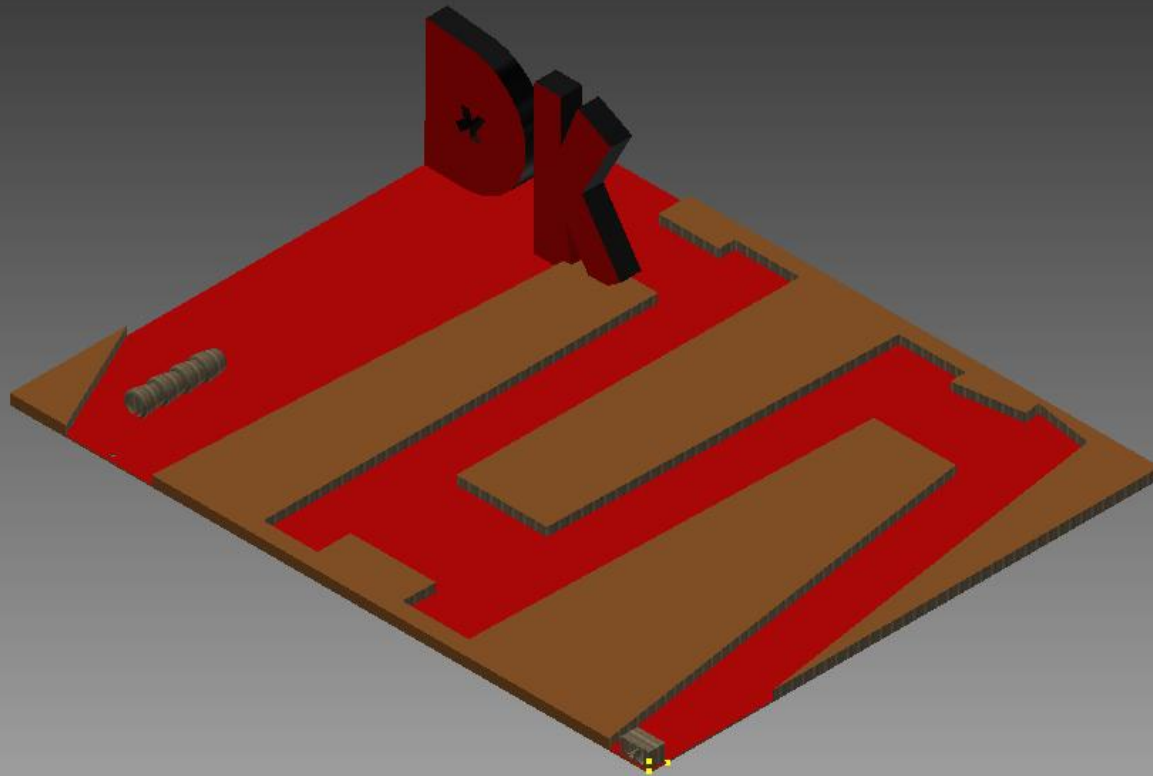
Plinko Hole

Based Off the fast money making game show



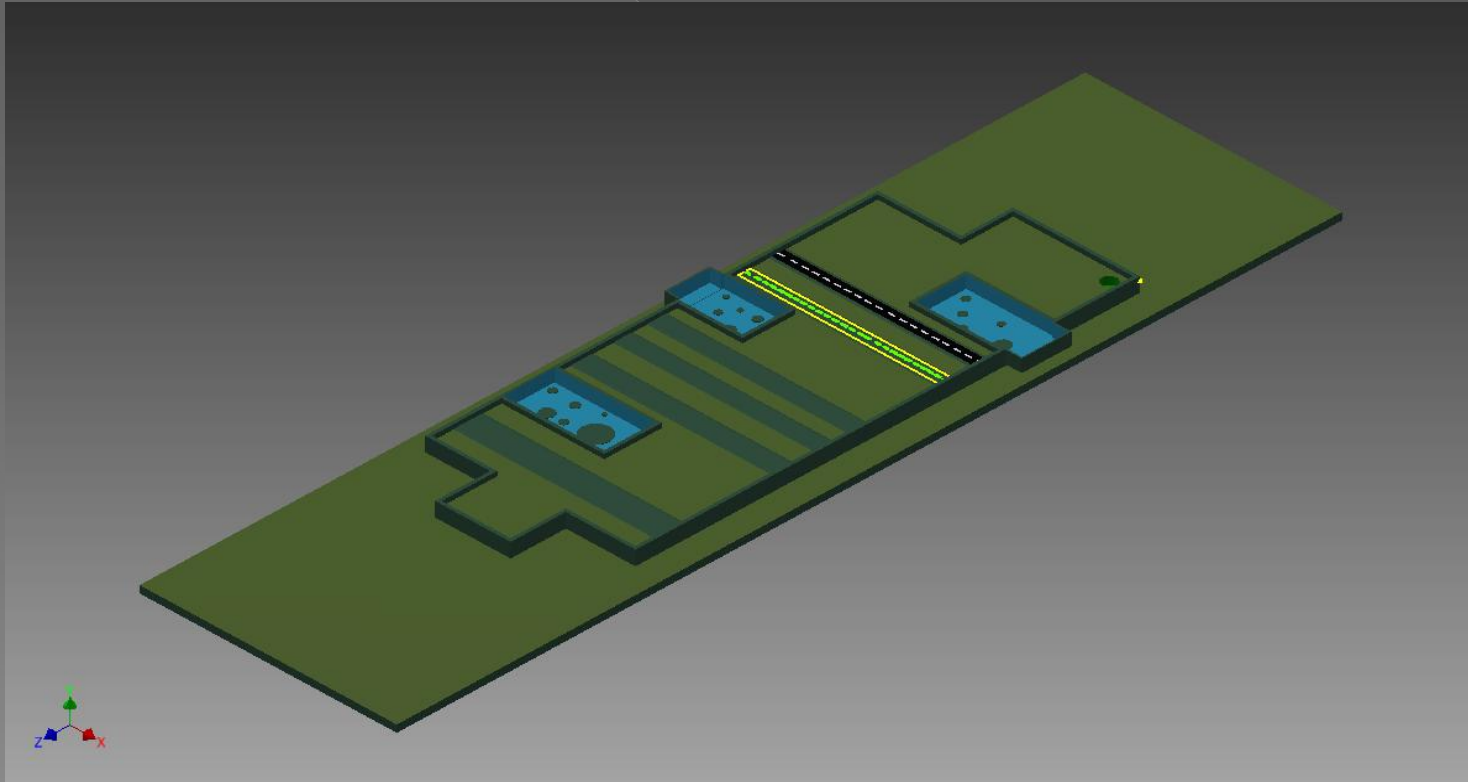
Donkey Kong Hole

Everyone's favorite childhood arcade game

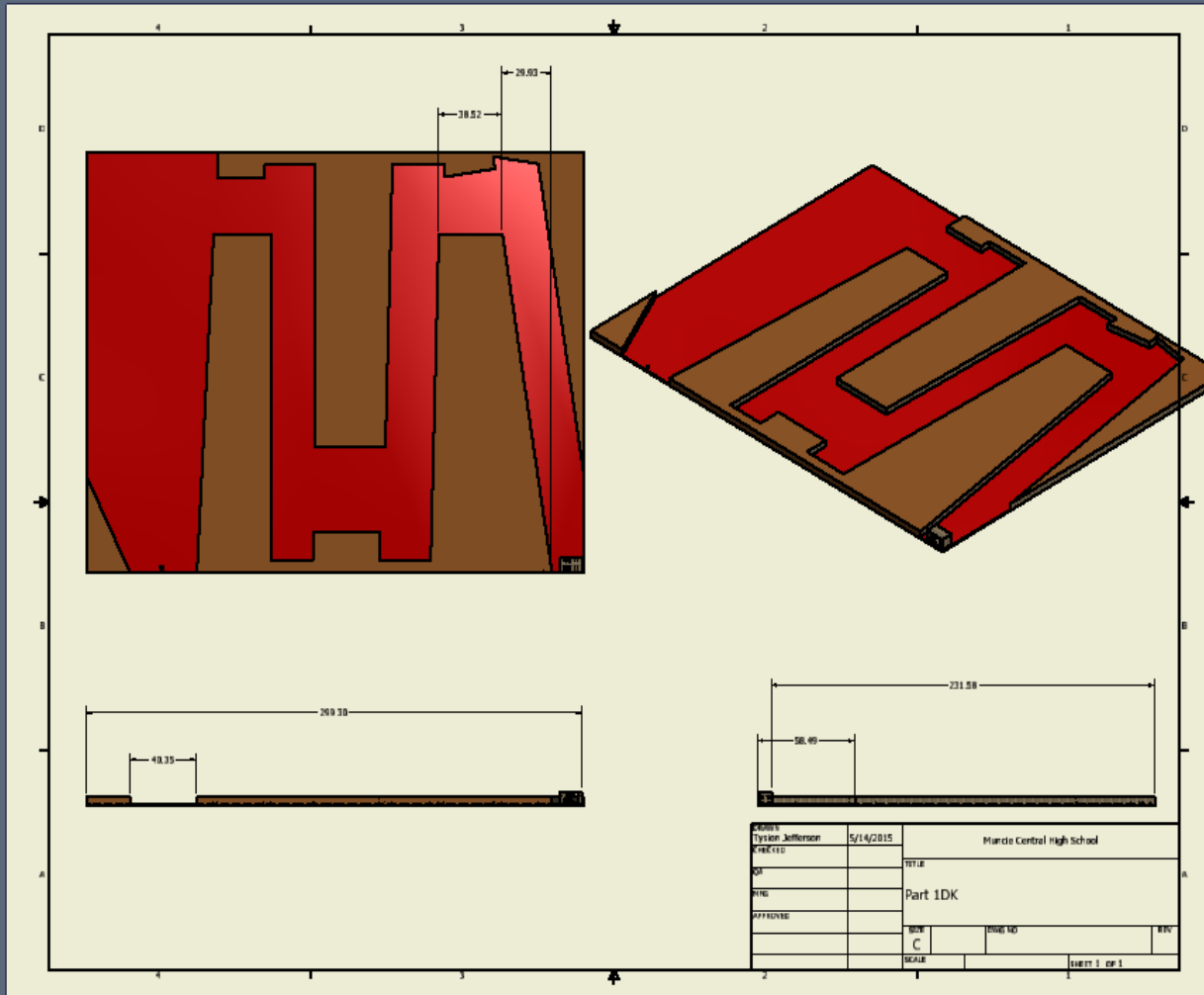


The Frogger Hole

- The game everyone spent countless hours on



Tysion's IDW



Constraints

- All holes within a group/zone must have a consistent theme.
- The concept design cannot exceed 25' x 20'. Create your hole on a 25' by 20' by 1' base.
- Holes can be elevated up to 5', but appropriate safety precautions must be taken.
- All components of the hole must be less than 5' tall.
- Pathways as needed to move from hole to hole must be a minimum of 36" wide.
- Holes must have at least 2 assembled parts. (2 IPTs + 1 IAM)
Remember when transferring files, it is ESSENTIAL you know what version of Inventor is being used AND ALL PARTS MUST BE WITH THE ASSEMBLY.
- All holes will have a standard tee off pad and scoring podium (these parts will provided by the project manager).
- All 3D modeling should be done to FULL SCALE. Be mindful of scale and units!